

Detex Works Here.

Life Safety,
Security Door Hardware
and
Integrated Door
Security Systems

EMERGENCY EXIT ONLY
PUSH HERE
ALARM WILL SOUND



Where Trust is Built™
DETEX®
Life Safety and Security Door Hardware

LIFE SAFETY & SECURITY DOOR HARDWARE



10 & 40 SERIES RIM EXIT DEVICES



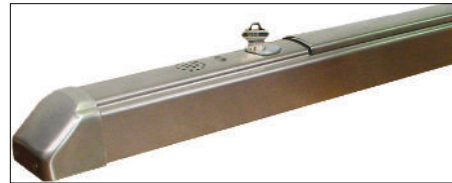
10 SERIES
(WIDE STILE)



40 SERIES
(NARROW STILE)

Product Information

- Super heavy duty for use on high traffic, high abuse doors
- All exposed surfaces are architectural finishes over stainless steel
- Stainless steel, deadlocking Pullman type latchbolt
- Angled end-cap deflects damage from device
- Patented mounting plate and strike locator system
- Retrofits to multiple manufacturers' door preparations (10 Series)
- Quick & easy change on a variety of outside trims and functions
- UL certified at over 1,000,000 cycles
- Non-handed
- 1/8 turn hex key or cylinder dogging
- Exceeds all Life Safety, ADA, California 19, ANSI/BHMA A 156.3 2001 Grade 1 requirements
- U.L. Listed Panic Hardware, U.L. Listed, Fire Rated option available
- 10 year limited warranty on mechanical with 3 year limited warranty on electrical
- Available for 36" or 48" door widths



ANGLED
END CAP

PUSHPAD
FLUSH
WHEN
DOGGED



MOUNTING PLATE & STRIKE LOCATOR



- 20 SERIES (Wide Stile)
Top and Bottom Rod
(Also available)
- 21 SERIES (Wide Stile)
Top Rod Only (Shown)



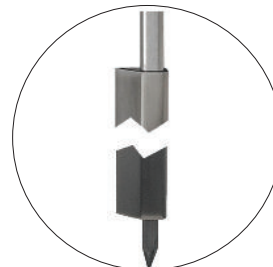
20 & 50 SERIES SURFACE VERTICAL ROD DEVICES

Product Information

- Super heavy duty for use on high traffic, high abuse doors
- All exposed surfaces are architectural finishes over stainless steel
- Ramped bottom latch guard deflects damage and meets ADA requirements
- Stainless steel rod covers add security and protect against vandalism
- Angled end-cap deflects damage from device
- Patented mounting plate and strike locator system
- Quick & easy change on a variety of outside trims and functions
- 1/8 turn hex key or cylinder dogging
- Exceeds all Life Safety, ADA, California 19, ANSI/BHMA A 156.3 2001 Grade 1 requirements
- U.L. Listed Panic Hardware, U.L. Listed, Fire Rated up to 10' high doors including Top Rod Only
- 10 year limited warranty on mechanical with 3 year limited warranty on electrical
- Available for 36" or 48" door widths

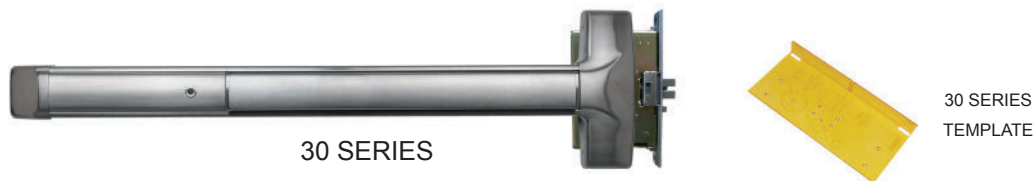


- 50 SERIES (Narrow Stile)
Top and Bottom Rod (Shown)
also available
- 51 SERIES (Narrow Stile)
Top Rod Only



LIFE SAFETY & SECURITY DOOR HARDWARE

ADVANTEX 30 SERIES MORTISE EXIT DEVICES



Product Information

- Super heavy duty for use on high traffic, high abuse doors
- All exposed surfaces are architectural finishes over stainless steel
- 3/4" projection stainless steel latchbolt with deadlocking and anti-friction retractor
- Angled end-cap deflects damage from device
- Patented mounting plate system
- Heavy duty mortise lock case and components
- Quick & easy change on a variety of outside trims and functions
- Non-handed
- 1/8 turn hex key or cylinder dogging
- Exceeds all Life Safety, ADA, California 19, ANSI/BHMA A 156.3 2001 Grade 1 requirements
- U.L. Listed Panic Hardware, U.L. Listed, Fire Rated option available
- 10 year limited warranty on mechanical with 3 year limited warranty on electrical
- Available for 36" or 48" door widths



ADVANTEX FINISHES



ADVANTEX FUNCTIONS

ANSI Function:

- 01 - Exit Only - No Trim
- 02 - Dummy Trim - No Cylinder
- 03 - Entrance by trim when latchbolt is retracted by key. Key removable only when locked (Rim cylinder required)
- 08 - Entrance by lever. Key locks or unlocks lever (Mortise cylinder required)
- 09 - Lever trim active by key; locked when key removed (Mortise cylinder required)
- 10 - Entrance by lever. Inside or outside key locks or unlocks lever
- 14 - Entrance by lever. Lever operable at all times (No cylinder)

ADVANTEX TRIM

Trim Designs for 10/20/21/30 Series Devices



Function: 01 Function: 02 Function: 03 Function: 01 Function: 03

Lever Trims



Function: 08, 09, 10 Function: 02, 14

Vandal resistant clutching levers are standard on all wide stile lever trims

Trim Designs for 40/50/51 Series Devices



Function: 03 Function: 01 Function: 02 Function: 03

Lever Trims



Function: 08, 09 Function: 02, 14

Factory installed mortise cylinders shown - sold separately

LIFE SAFETY & SECURITY DOOR HARDWARE

VALUE SERIES® V40 SERIES RIM EXIT DEVICES



V40 SERIES
(711 Finish Shown)



V40 SERIES
(V40xEB shown with
factory installed mortise
cylinder - sold separately)

Wide Stile Shown - for Narrow Stile specify NS Option
(For use on 36" and 48" doors with 2" stile)

Product Information

- Durable design for use on primary and secondary doors
- Same great design and assembly as Advantex
- High impact ABS and anodized surfaces provide lasting beauty
- Stainless Steel deadlocking Pullman type latchbolt
- Angled end-cap deflects damage from device
- Patented mounting plate and strike locator system
- Quick & easy change on a variety of outside trims and functions
- Non-handed
- Narrow stile door option (Required for 2" stile 36" and 48" doors)
- 1/8 turn hex key or cylinder dogging
- Exceeds 500,000 push cycles
- 10 year limited warranty on mechanical with 3 year limited warranty on electrical



VALUE SERIES® V50 SERIES SURFACE VERTICAL ROD DEVICES

Product Information

- Priced to be the best value for durable, attractive panic hardware
- High impact ABS and anodized surfaces provide lasting beauty
- Stainless steel 3/4" deadlocking, Pullman-type top latch bolt
- Bottom drop bolt, 5/8" dia. x 5-5/8" long secures into strike plate
- Patented mounting plate and strike locator system
- Heavy-duty angled end-cap deflects damage from device
- Heavy-duty ribbed aluminum rail extrusion
- Outside trims are easily changed or rekeyed without removing device from door
- Standard and narrow stile pull trims available
- Handed, field reversible, field sizable
- 10 year limited warranty on mechanical with 3 year limited warranty on electrical
- Available for 36" or 48" door widths



V50 SERIES
Top and Bottom Rod (Shown)
also available
V51 SERIES
Top Rod Only

V50xRCxBG
Optional Rod Covers and
Bolt Guard

LIFE SAFETY & SECURITY DOOR HARDWARE

VALUE SERIES® TRIM

Trim Designs for V40/V50/V51 Series Devices



A

Function: 02



Function: 03



AN

Function: 02



Function: 03



P

Function: 03



PN

Function: 03



WS

Function: 03

Lever Trims



B

Function: 08



Function: 02, 14

Cover Plate is provided with B trim for use with 161 prep doors

Factory installed mortise cylinders shown - sold separately

Series 800 CONTROLLERS AND POWER SUPPLIES



80-800



90-800



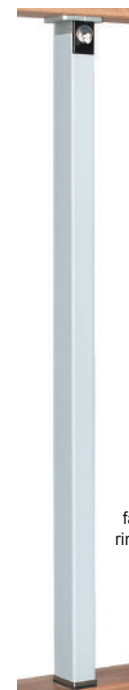
81 / 82 / 83 / 84 / 85-800

Product Information

- 80-800 - 120VAC / 12 or 24VDC Power Supply - 1.0A continuous; includes battery charging circuit - Can be used with ED, EE, EM products
- 90-800 - 120VAC / 24VDC Power Supply - 1.0A continuous - Can be used with ED, EE, EM products
- 81-800 - 120VAC / 24VDC Controller and Power Supply - 1 Amp continuous - Powers and controls ER device for 1 door with signal output for 1 operator
- 82-800 - 120VAC / 24VDC Controller and Power Supply - 2 Amp continuous - Powers and controls ER device for 1 pair of doors with signal output for 1 operator
- 83-800 - 120VAC / 24VDC Controller and Power Supply - 2 Amp continuous - Powers and controls ER device for 2 independent doors with signal output for 2 operators
- 84-800 - 120VAC / 24VDC Controller and Power Supply - 1 Amp continuous - Powers and controls EExER device for 1 door with signal output for 1 operator
- 85-800 - 120VAC / 24VDC Controller and Power Supply - 2 Amp continuous - Powers and controls EExER device for 2 independent doors with signal output for 2 operators

90 SERIES MULLIONS

- Heavy-duty keyed removable mullion for all double door openings
- 11 gage steel mullion tube for superior strength
- Removes easily with one turn of key
- Relatches easily without use of key
- Listed for three hour fire rated openings up to 8'0" x 8'0"
- Warnock Hersey labeled for use with other manufacturer's fire exit hardware



F90KR Mullion (shown with factory installed rim cylinder - sold separately)

LIFE SAFETY & SECURITY DOOR HARDWARE

ADVANTEX VALUE SERIES® ELECTRIFIED OPTIONS

EXIT ALARM OPTIONS

Detex series of Exit Alarms provide security on emergency exit doors. Each is equipped with an internal 100 decibel horn. Models are available with 9 volt battery operation as well as hardwired 12/24V AC/DC. Each uses a built-in key switch to arm and disarm the unit. The Key Stop (KS) option requires key to be removed only in the armed position. Non-fire rated devices, without the KS option, can use the cylinder to dog the device in the disarmed mode; thus one cylinder performs both functions. Devices with remote input/output accept remote inhibit dry contact switch input as well as provide a SPDT relay output (24V, 1A max). The relay is actuated when the unit is in alarm. All Exit Alarm options are available as a Slide-In Filler for field installation.



Advantex



Value Series

EA

The Exit Alarm option monitors the pushpad for exit alarming. The EA operates on either a 9V battery or a 12/24V AC/DC power source (sold separate). The EA has the remote input/output feature. Available on Advantex devices.

EB

The Exit Alarm Battery Powered option is a stand-alone 9V battery powered alarm. Available on Value Series rim and surface vertical rod devices.

EBxW

The EBxW option is a weatherized version of the EB device. The EBxW has the remote input/output feature to permit monitor and control from a remote location. Available on Value Series devices.

EH

The Exit Hardwired Alarm option monitors the pushpad for exit alarming. The EH includes a transformer and a 9V battery backup. Available on Value Series devices.

EHxR

The EHxR adds the remote input output feature to the EH device. Available on Value Series devices.

CONTROLLED EXIT OPTIONS

Detex offers three versions of latch holdback option: ED, ER and EExER and three delayed egress options: EE, EM and EExER. The delayed egress options include a wired remote bypass which can be actuated by an access control system or keyswitch. Each has SPDT relay outputs for alarm and bypass. The Key Stop (KS) option requires key to be removed only in the armed position.



Advantex



Value Series

ED

The ED, Electric Dogging option, provides a low cost solution where remote retraction is not required. Depressing the pushpad after 12/24V AC/DC 0.2A has been applied to the device holds the latch back and pushpad retracted, removing projections, allowing unobstructed entry/exit. It is designed for openings which need to be unlatched for extended periods of time. Applications include banks of entry doors and interior fire doors for theaters and assemblies. Simply removing power at the end of the day secures the facility. Available in all Advantex devices and Value Series rim devices. Power supply sold separate.

ER

The ER, Latch Retraction option provides electric motorized retraction of the pushpad and latch(es). Both remain retracted as long as power is applied. Applications include security doors with access control and or an automatic operator. This 24V DC unit requires only 2A to retract the device and 0.2A to hold the pushpad and latches retracted. Requires Detex 81/82/83-800 controller (sold separate) depending on application. Available in all Advantex devices and Value Series rim devices.

Factory installed mortise cylinders shown - sold separately

LIFE SAFETY & SECURITY DOOR HARDWARE

ADVANTEX VALUE SERIES® ELECTRIFIED OPTIONS CONT'D

CONTROLLED EXIT OPTIONS CONT'D

EExER



PUSH UNTIL ALARM SOUNDS
DOOR CAN BE OPENED IN 15 SECONDS



Advantex

The EExER combines the ER remote latch retraction and EE delayed egress into one device. With no power applied it is a high security Grade 1 exit device providing immediate egress. In the ER mode it provides free entry and egress with the pushpad retracted for quiet operation. In the EE mode, as allowed by code, the door is secured from egress for 15 seconds. Requires Detex 84/85-800 controller; depending on application. Controller **SOLD SEPARATELY!** Applications include employee entrances, receiving doors, and high security entrances with automatic operators. Available in all Advantex rim devices.



Advantex

PUSH UNTIL ALARM SOUNDS
DOOR CAN BE OPENED IN 15 SECONDS



Value Series



EM Option only

EE



The EE Delayed Egress option provides the functions required by both the IBC and NFPA 101. The internal alarm horn sounds during the 15 second delay, giving security personnel time to respond to someone attempting to use the exit. As all delayed egress systems, it requires a fire alarm interface and a power supply. Everything else is self-contained. The included cylinder switch allows non-fire rated devices to be cylinder dogged in the unarmed position. Detex filtered and regulated 24V DC power supply required and included. Available in all Advantex models and Value Series rim devices.

EM



The EM Delayed Egress with Magnetic Lock option provides two point delayed egress for single door and pairs of doors with a mullion. Other than moving the delay locking from the exit device to the magnetic lock, the EM operation is the same as the EE. Detex filtered and regulated 24V DC power supply required and included. Available in all Advantex models and Value Series rim devices. For exterior delayed egress applications see our EasyKit WDE selections.

SIGNAL SWITCH OPTIONS

Detex provides various built-in monitoring options in its exit devices. The standard contacts are gold plated; rated at 24V AC/DC 100mA with reduced harmonic bounce for interface with access control systems. Some switches are available in a high current version (option xV). These switches are rated at 24V AC/DC, 3A. Typical applications would be part of a magnetic lock access control egress system.



Advantex



Value Series

ES

The Electric Switching option includes monitor switches for deadlatch and trim input spindle. Available in Advantex rim and mortise devices and Value Series rim devices.

EX

The Request to Exit option monitors the pushpad being depressed. It is available with the standard switch and as a high current EXxV. Both are available in all Advantex and Value Series devices.

EXxW

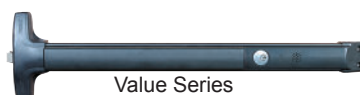


The weatherized signalling version of the EX for use in wet environment. The EXxW is available in all Advantex and Value Series devices. It is also available as a high current switch EXVxW version for all Advantex and Value Series devices.

The EX and EXxW standard switches are available as Slide-In Fillers for field installation for Value Series.



Advantex



Value Series

EI

The Electric Integration option allows integrators to wire into the three switches: deadlatch monitor, trim input spindle, and cylinder key switch, each rated at 200mA at 24V AC/DC. There is also inputs to internal horn; 12/24V DC at 150mA and the two LEDs each 12/24V DC. The EI requires inputs and power from other sources.

Factory installed mortise cylinders shown - sold separately

LIFE SAFETY & SECURITY DOOR HARDWARE

AO19™

LOW ENERGY AUTOMATIC DOOR OPERATORS



AO19-1
(Single Door)



AO19-2
(Double Doors)



AO19-3
(Double Egress Doors)

Product Information

- Available in single, pair (twin) for independent and double acting openings
- Meets requirements for ANSI/BHMA A156.19
- Provides ADA compliant access to handicap applications
- Heavy duty product for high use and high abuse low energy applications
- Hanger plate allows quick installation
- Self-contained unit in an extruded case allows easy access for maintenance and adjustments
- Works with existing access control, locking and computer signal devices
- Single voltage source required to operate (120VAC)
- Electric lock switch provides a small delay after door opens to unlock an electric strike, maglock or other type of electric lock
- Adjustable delayed activation for sequenced vestibule doors
- Reverse on obstruction stalls a door during closing cycle and re-activates an open if an obstruction is sensed anytime before the latch position. Must be selected to activate.
- Adjustable closing speed
- 3 year mechanical and 1 year electrical limited warranty



EXIT CONTROL HARDWARE



ECL-230D



ECL-230D-PH



ECL-600

Product Information

Factory installed rim cylinders shown - sold separately

- Rugged, dependable and proven alarmed exit device for secondary exits (ECL-230D and ECL-230D-PH)
- Rugged, dependable relatching alarmed exit device for secondary exits (ECL-600)
- Approximately 100dB piezo alarm
- 9-volt battery
- 1" throw, saw-resistant deadbolt (ECL-230D and ECL-230D-PH)
- 1" throw, saw resistant deadbolt and deadlocking latchbolt provide 2-point locking (ECL-600)
- Resists over 2200 lbs outside pull force
- Photo-luminescent metal paddle sign
- Code-compliant, alarmed fire exit hardware (ECL-600)
- Tamper resistant housing with cover lock
- Non-handed
- Available in 2 colors - gray or black (ECL-230D and ECL-230D-PH)
- Optional ECL-620 outside lever trim (ECL-600)
- Optional two-point locking (see VRA-143 and DX Bolts)
- Corrosion-resistant alloy lock body
- Signage available in many languages
- U.L. Listed panic hardware (ECL-230D and ECL-230D-PH)
- Warnock Hersey Labeled fire exit hardware for 3 hours, single or pairs of doors (ECL-600)
- Exceeds all Life Safety, ADA, California Title 19, ANSI/BHMA requirements for all building codes
- Ten year limited warranty



LIFE SAFETY & SECURITY DOOR HARDWARE

EAX® EXIT ALARMS



EAX-500xBK
(Surface Mount)
Shown with factory
installed mortise cylinder
- sold separately



EAX-2500xBK
(Surface Mount)
Shown with factory
installed mortise cylinder
- sold separately



EAX-3500
Shown with factory
installed mortise cylinder
- sold separately



EAX-411SK



EAX-4200SK
(Rim cylinder included)

Optional Black Shown - Specify BK

Product Information (EAX-500, EAX-2500 and EAX-3500)

- Low-cost, self-contained door alarm with piezo horn that sounds to warn of unauthorized use of a door
- Available in 2 colors, gray and black, that blends with architectural décor (EAX-500 and EAX-2500 only)
- Upgrade features are included and field selectable at no added cost
- Patented cam assembly automatically adjusts for different sizes of cylinders without the use of spacers
- Mortise cylinder required with standard cam
- Auto-rearm feature is field selectable, default as 2 minutes
- EAX-3500 provides timed bypass feature with 4 standard adjustable time settings (up to 5, 10, 20, 40 minutes)
- Rim cylinder required for optional OKC
- Three year limited warranty
- Key stop feature included at no extra cost (standard on EAX-3500)
- Optional MC65 mortise cylinder
- IC7 - Optional factory installed IC mortise cylinder housing

Product Information (EAX-411SK and EAX-4200SK)

- EAX-411SK provides the solution to propped open door in a stand-alone device
- Kit includes transformer and magnetic contact
- EAX-4200SK provides complete door monitoring in one easy to use unit
- Kit includes rim cylinder, transformer and magnetic contacts

EXIT CONTROL HARDWARE ACCESSORIES

VERTICAL ROD ASSEMBLY (VRA-143)

- Sturdy assembly for use with ECL-230 to provide security on single or pairs of doors up to 10' where two-point locking is required. "U.L. LISTED"
- Heavy-duty, 3/8" diameter locking bolts

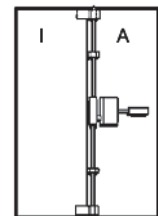
DX BOLTS



- Provides hinge-side protection as an additional line of defense against break-ins
- One piece construction provides superior holding strength
- Kits of 1 bolt, 2 bolts or 3 bolts include through-bolt mounting hardware
- Add DX bolts to any Detex multi-point lock to create 4 point and 5 point locks
- Excellent for exterior applications or doors that get wet

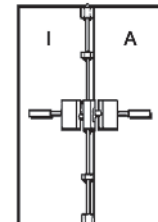


I = Inactive Leaf A = Active Leaf



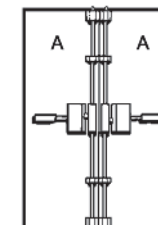
TYPE "B"

I = Inactive Leaf A = Active Leaf



TYPE "C"

A = Active Leaf



TYPE "D"

INTEGRATED DOOR SECURITY SYSTEMS

EasyKit® DOOR CONTROL SYSTEMS



Detex EasyKit

—
**The integrated
door security
system
you need for
access and
egress control**

INTEGRATED DOOR SECURITY SYSTEMS



DOOR CONTROL SYSTEMS



Access-Controlled Doors

For an access-controlled entrance that requires an outside keypad or card reader, you can set up code-compliant egress to unlock the door and disarm life safety and security hardware.

Electric Dogging with Central Control

Available with Electric Latch Retraction

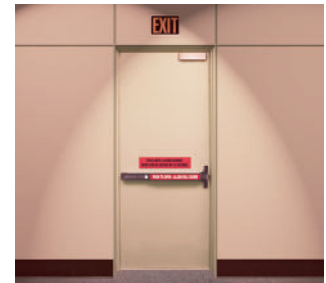
Remotely control a single door or a bank of doors by means of a switch or an Access Control system. One door or all doors will remain unlocked, ready for push-pull use. A timer may be added for activation all day or for a specified time. Use Electric Dogging or Electric Latch Retraction as the primary component.



Automatically Operated Doors

With Electric Latch Retraction

Control automatically operated doors by means of a controller that activates the operator. Electric Latch retraction is activated before the controller signals the operator to open the door. A switch or an access control system manages the initial input that commences a sequence of activities at the controller.



Delayed Egress

Prevent losses at emergency exits with Detex delayed-egress electronic hardware including magnetic locks. Depressing the pushpad initiates an alarm and an irreversible 15-second delay before the magnetic lock releases, allowing exit through the door. Security personnel have time to respond before a loss occurs.



Weatherized Delayed Egress

Wherever the weather or other moisture sources could affect the operation of life safety or security hardware, Detex weatherized hardware stands up to the rigors of the elements. Use delayed egress equipment to protect against loss at outdoor gates or exits.



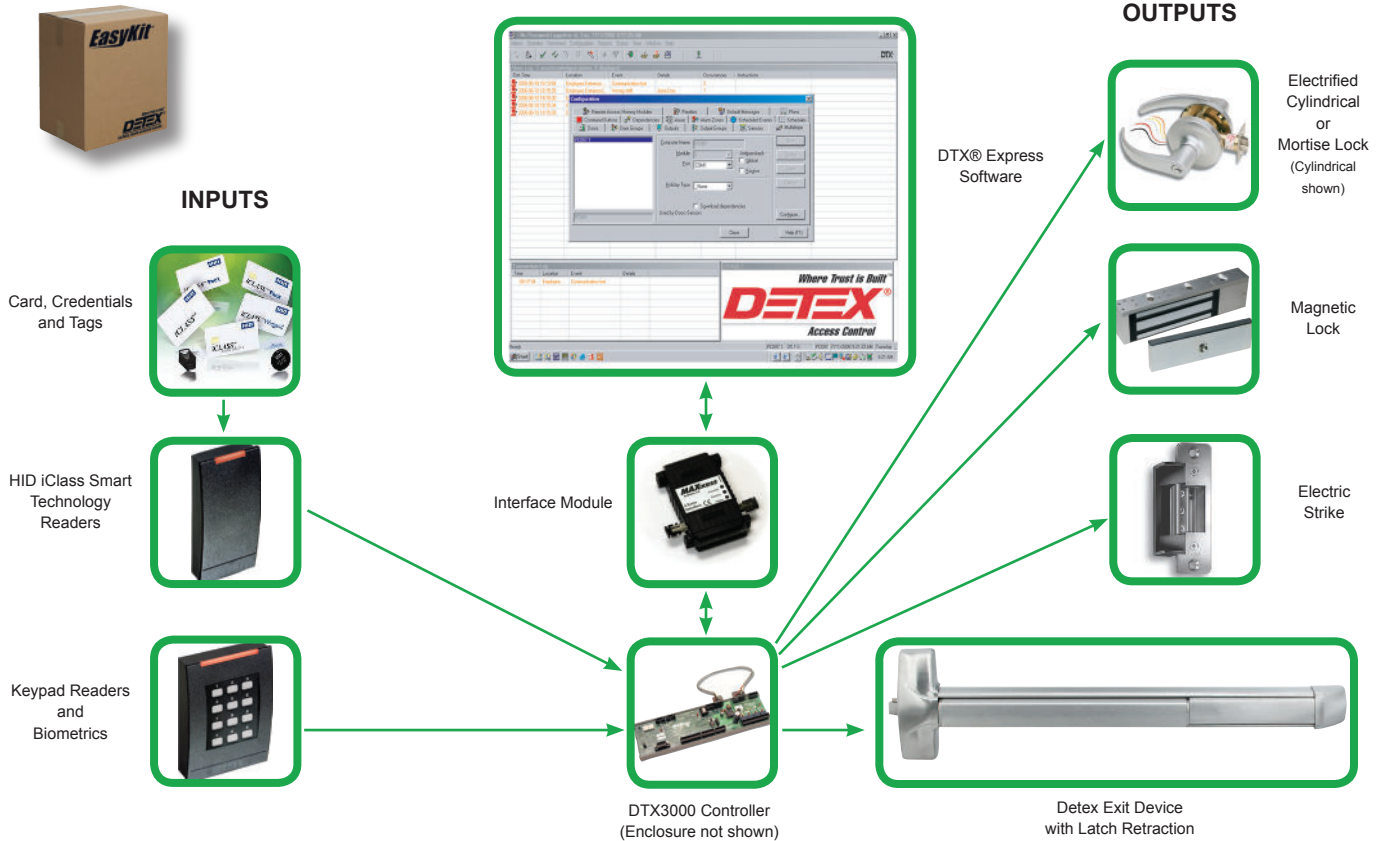
COMPONENTS



INTEGRATED DOOR SECURITY SYSTEMS

EasyKit

PC MANAGED ACCESS CONTROLLED SYSTEMS



PC-Managed Access Controlled EasyKit for 1 to 4 doors

DTX® Lite is a software package that provides multitasking support and flexibility. Its open architecture enables you to build a new security management system or to integrate with existing card readers and alarm monitoring devices. The flexibility of DTX® Lite gives you the power to customize your access control system to your specific needs, without requiring advanced technical expertise. You can control access to single doors or multiple zones, track visitor usage or employee attendance, and activate after-hour security.



This Access Controlled EasyKit, programmable at a PC, uses a **DTX3000 Series Controller** and **DTX® Lite Software**. An **electric strike** is standard, but you can also select electrified mortise locks, cylindrical locks, door magnets or Detex exit devices with latch retraction. The software recognizes up to **1,000 cards** and has a capability of **20 access levels**.

PC-Managed Access Controlled EasyKit for 1 to 30 doors

DTX® EXpress software offers multitasking support and flexibility, allowing you to configure a new security management system or to integrate with existing card readers and alarm monitoring devices. With this software program, you don't need advanced technical expertise to control access to buildings, offices or manufacturing areas, to single doors or multiple zones. From a single workstation, you can track visitor usage or employee attendance, and activate after-hours security.



This Access Controlled EasyKit is also programmable at a PC. It uses a **DTX3000 Series Controller**, and **DTX® EXpress software**. An **electric strike** is standard, but electrified mortise locks, cylindrical locks, door magnets and Detex exit devices with latch retraction are also available. The software recognizes up to **5,000 cards**, and has the capability for **100 access levels**.